

# Certificate Of Analysis



---

**Client:****EUROLAB Peptides**

Dicky DeSchuyter  
Heirwegdreef  
Stekene 9190  
Belgium  
[dickydeschuyter@hotmail.be](mailto:dickydeschuyter@hotmail.be)

**Laboratory:**

**Liquilabs s.r.o.**  
Ohradní 24B  
14000 Michle  
Czechia  
[www.liquilabs.cz](http://www.liquilabs.cz)

---

## Sample Identification

---


**Sample Name** Semax 10 mg **Batch Number** SEMAX/100-01 **Date Published** 2026-02-16 17:10

---

## Results for Lyo-0283

<b>Analysis of Peptide Identity, Content and Purity</b>	<b>Result</b>	<b>Unit</b>	<b>Uncertainty</b>	<b>Reporting Limit</b>
Semax Assay Peptide Screening	8.04	mg	[± 0.04]	(RT)
Semax Identification by RT Peptide Screening	0.998		[± 0.005]	(RT)
Semax Identification by spectrum Peptide Screening	995		[± 10]	(RT)
Semax Purity Peptide Screening	99	%	[± 1]	(RT)

# Attachments for Lyo-0283

	<b>Method Specification</b>	
<b>Determination of identity, content and purity of Semax</b>		
<i>Document number</i> SEMEX_001_2026	<i>Superseded document</i> -	<i>Number of pages</i> 3

## 1. Content Assesment

### 1.1. Instrumentation

Module	Name	Serial Number
System Controller	Shimadzu SCL-10ADvp	C21014112659
Degassing Unit	Shimadzu DGU-14A	NA
Pump A	Shimadzu LC-10ADvp	C20964130075
Pump B	Shimadzu LC-10ADvp	C20953770781
Autosampler	Shimadzu SIL-10ADvp	C21054109114
Colum Thermostat	Shimadzu CTO-10ACvp	C21033770144
Detector	Shimadzu SPD-10ADvp	C20994233588

### 1.2. Chromatographic conditions

Chromatographic conditions	
Eluent A	0.1% TFA in Water (HPLC, Gradient Grade)
Eluent B	0.1% TFA in Acetonitrile (HPLC, Gradient Grade)
Flow rate	0.4 mL/min
Program	Gradient elution
Injection volume	0.5 µL
Colum Temperature	60°C
Column	Phenomenex Biozen Peptide Polar C18, 150x2.1mm 3µm
Detection wavelength	214nm

Gradient Program		
Time [min]	A [%]	B [%]
3	95	5
25.5	5	95
26	5	95
28	95	5
35	end	

1

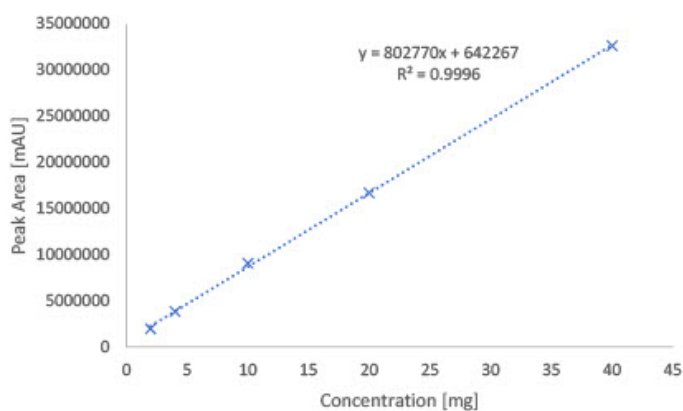
Attachment for Lyo-0283  
Filename: 1771255410190-892c55b3-f26e-44cc-a789-eddc5cb81830\_1.jpg

### 1.3. Sample preparation

Whole amount of container was dissolved in 2mL of water (HPLC, Gradient Grade). Aliquote part of 1 mL was dispensed into HPLC vial for analysis.

### 1.4. Calibration curve

Calibration curve detail	
Quantitative method	External Standard
Calibration Type	Linear
Number of calibration points	5
Force through Zero	Disabled
Weighting Method	None



## 2. Purity assessment

### 2.1 Instrumentation

Module	Name	Serial Number
System Controller	Shimadzu SCL-10ADvp	C21014112659
Degassing Unit	Shimadzu DGU-14A	NA
Pump A	Shimadzu LC-10ADvp	C20964130075
Pump B	Shimadzu LC-10ADvp	C20953770781
Autosampler	Shimadzu SIL-10ADvp	C21054109114
Column Thermostat	Shimadzu CTO-10ACvp	C21033770144
Detector	Shimadzu SPD-10ADvp	C20994233588

### 2.2 Chromatographic conditions

Chromatographic conditions	
Eluent A	0.1% TFA in Water (HPLC, Gradient Grade)
Eluent B	0.1% TFA in Acetonitrile (HPLC, Gradient Grade)
Flow rate	0.4 mL/min
Program	Gradient elution
Injection volume	0.5 µL
Column Temperature	60°C
Column	Phenomenex Biozen Peptide Polar C18, 150x2.1mm 3µm
Detection wavelength	214nm

Gradient Program		
Time [min]	A [%]	B [%]
3	95	5
25.5	5	95
26	5	95
28	95	5
35	end	

### 1.5. Sample preparation

Whole amount of container was dissolved in 2mL of water (HPLC, Gradient Grade). Aliquote part of 1 mL was dispensed into HPLC vial for analysis.

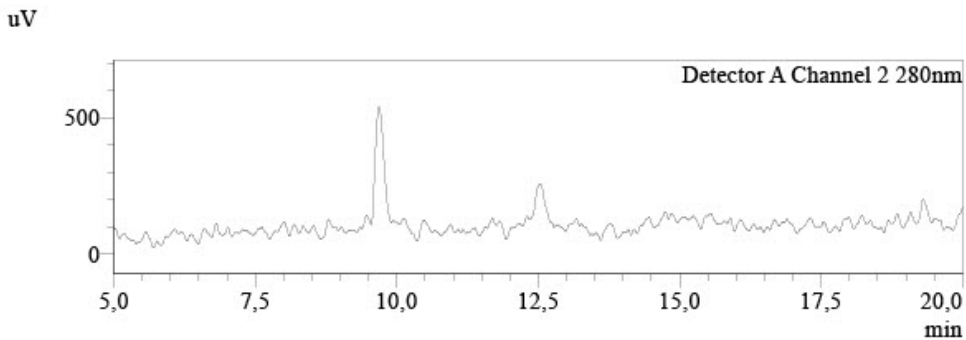
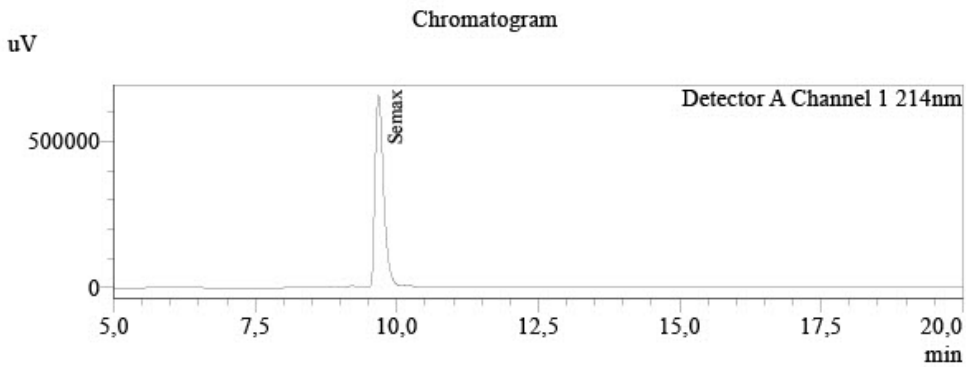
### 1.6. Purity assesment

Purity of compound assessed by area normalization method, comparing area of each peak to sum of area of all peaks detected at wavelenght of 214 nm.

# Analysis Report



Sample Information  
Injection Volume : 0,5  
Data File : LYO-0283\_001.lcd  
Method File : Peptide screening\_Group E.lcm  
Date Acquired : 13.02.2026 20:46:55



Peak Table

Peak#	Name	Ret. Time	Conc.	Unit	Area%
1		8.881	0.000		0.186
2		9.204	0.000		0.712
3	Semax	9.678	8.036	mg/L	98.559
4		10.196	0.000		0.542
Total					100,000

Peak Table

Peak#	Name	Ret. Time	Conc.	Unit
Total				

Attachment for Lyo-0283  
Filename: LYO-0283.jpg

## Responsibles



**Mr. Ján Galbavý**  
Founder/Manager

Analysis results relate only to the samples tested.

This document shall not be reproduced except in full, without the written approval of Liquilabs s.r.o.